

I LIBRI DI 30GIORNI

I canti gregoriani più semplici che i fedeli
sono invitati a imparare e cantare
secondo l'intenzione della costituzione
del Concilio Vaticano II sulla Sacra Liturgia



I CANTI
DELLA
TRADIZIONE

I CANTI DELLA TRADIZIONE

I canti gregoriani più semplici

Introduzione del libretto *Iubilate Deo* voluta da Paolo VI e pubblicato nel 1974 dalla Sacra Congregazione per il Culto divino

Il Concilio ecumenico Vaticano II, nella costituzione sulla Sacra Liturgia, dopo aver esortato affinché venga dato, nelle celebrazioni liturgiche, il conveniente spazio alle lingue nazionali, aggiunge questo avvertimento: «Si abbia cura tuttavia che i fedeli cristiani possano allo stesso tempo recitare o cantare anche in lingua latina le parti dell'Ordinario della Messa che li riguardano»¹.

Guidato da questo pensiero e da questo intendimento, il sommo pontefice Paolo VI più volte negli ultimi tempi² ha manifestato il desiderio che il canto gregoriano accompagni le celebrazioni eucaristiche del popolo di Dio con la sua piacevole armonia, dando ad esse forza e vigore, e che le voci dei fedeli intonino canti sia gregoriani che in lingua nazionale.

Il presente opuscolo risponde ai desideri del Sommo Pontefice. In esso sono raccolte alcune delle melodie più semplici, che i fedeli dovranno cantare insieme, soprattutto in occasione dell'Anno Santo.

In questo modo il canto gregoriano rimarrà il vincolo che renderà tanti popoli una sola nazione, radunata nel nome di Cristo con un sol cuore, un solo pensiero, una sola voce. Infatti l'impulso all'unità, espresso dalla concordia delle voci nella varietà delle lingue, dei ritmi e delle armonie, rende mirabilmente manifesto il variegato accordo di una sola Chiesa: «È davvero un grande vincolo di unità», afferma Ambrogio, «il canto della moltitudine tutta del popolo in un solo coro! Diverse sono le corde della cetra, ma una sola la sinfonia. Spesso errano, in pochissime corde, le dita dell'artista; ma lo Spirito artista nel popolo non può errare»³.

Conceda Dio che la comune preghiera ottenga un esito felice e il cuore della Chiesa che prega risuoni con gioia e più in alto, per tutta la terra, con questi soavi e devoti accordi.

14 aprile 1974,
Domenica di Pasqua,
Risurrezione del Signore

¹ Concilio Vaticano II, costituzione sulla Sacra Liturgia *Sacrosanctum Concilium*, n. 54.

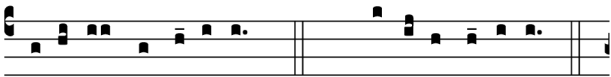
² 22 agosto 1973, nell'udienza generale; 12 ottobre 1973, all'Associazione internazionale di Musica Sacra (Cims); cfr. anche la Lettera del cardinale Giovanni Villot, segretario di Stato, al convegno dell'Associazione italiana di Santa Cecilia, Genova 26-30 settembre 1973, *L'Osservatore Romano*, 27 settembre 1973.

³ Sant'Ambrogio, *Explanationes psalmsorum*, in ps. 1, 9: Patrologia Latina 14, 925.


I CANTUS MISSÆ

1. Kyrie

Grad. Rom. XVI (secc. XI-XIII)

K 

y-ri-e e-le-i-son. *bis* Christe e-le-i-son. *bis*



Ky-ri-e e-le-i-son. Ky-ri-e e-le-i-son.

2. Gloria

Grad. Rom. VIII: *De Angelis* (sec. XVI)

G 

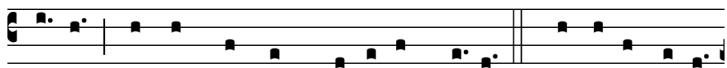
lo-ri-a in excelsis De-o. Et in terra pax homi-



nibus bonae vo-lunta-tis. Lauda-mus te. Benedi-cimus



te. Adora-mus te. Glo-ri-ficamus te. Gra-ti-as agimus



ti-bi propter magnam glo-ri- am tu- am. Domine De- us,



Rex caele-stis, De-us Pater omni-po-tens. Domine Fi- li u-



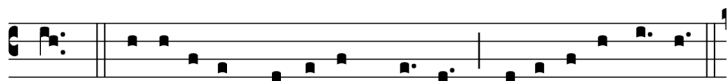
nigeni-te Ie-su Christe. Domine De-us Agnus De- i, Fi-



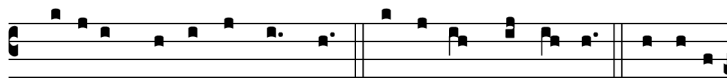
li-us Pa-tris. Qui tollis peccata mun-di, misere- re no-bis.



Qui tollis pecca-ta mundi, suscipe depre-ca-ti-onem no-



stram. Qui sedes ad dexte-ram Pa-tris, mi-se-re-re no-bis.



Quoni-am tu so-lus sanctus. Tu so-lus Domi-nus. Tu solus



Al-tis-si-mus, Ie-su Chri-ste. Cum San-cto Spi-ri-tu, in



glo-ri-a De-i Pa-tris. A-men.

3. Credo

Grad. Rom. III (sec. XVII)



redo in unum De- um, Patrem omnipotentem,



facto-rem caeli et terrae, vi-si-bi-li-um o-mni-um et



invi-si-bi-li-um. Et in unum Domi-num Ie-sum



Christum, Fi-li-um De-i u-ni-ge-ni-tum. Et ex Patre na-



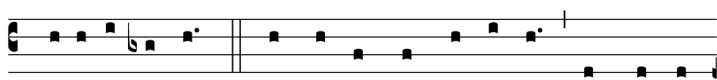
tum ante omni- a sae- cu- la. De- um de De- o, lumen



de lumi- ne, De- um ve- rum de De- o ve- ro. Ge- ni- tum



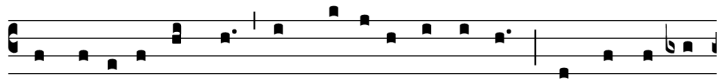
non fa- ctum, consubstan- ti- a- lem Patri: per quem o-



mni- a fa- cta sunt. Qui propter nos homi- nes, et propter



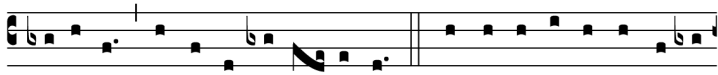
nostram sa- lu- tem descendit de cae- lis. Et incarna- tus est



de Spi- ri- tu Sancto ex Ma- ri- a Vir- gi- ne, et homo fa-



ctus est. Cru- ci- fi- xus e- ti- am pro nobis sub Pon- ti- o



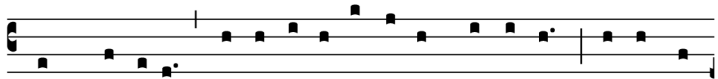
Pi-la-to, passus et sepul- tus est. Et re-surre-xit ter-ti- a



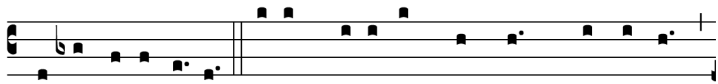
di- e, se-cundum scriptu- ras. Et ascendit in cae- lum,



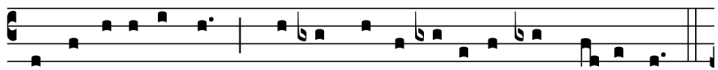
se-det ad dexte- ram Pa- tris. Et i- te-rum ventu-rus est



cum glo-ri- a iu-di-ca-re vi-vos et mortu- os, cu-ius re-



gni non e-rit fi-nis. Et in Spi-ri-tum Sanctum, Domi-num,



et vi-vi-fi-cantem: qui ex Patre Fi-li- oque pro-ce-dit.



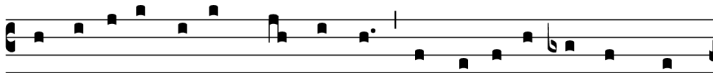
Qui cum Patre et Fi-li- o simul a-do-ra-tur et conglo-ri-



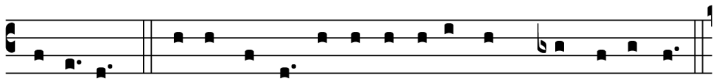
fi-ca-tur, qui lo-cu-tus est per Prophe- tas. Et unam,



sanctam, catho-li-cam et a-po-sto-li-cam Eccle-si-am.



Confi-te-or unum ba-ptisma in remissi-o-nem pec-



ca-to-rum. Et expec-to re-sur-recti-o-nem mor-tu-o-rum.

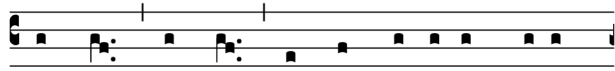


Et vi-tam ven-tu-ri sae-cu-li. A- men.

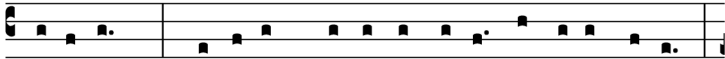
4. Sanctus

Grad. Rom. XVIII (sec. XIII)

S



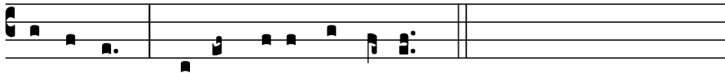
anctus, Sanctus, Sanctus Dominus De- us



Saba- oth. Ple- ni sunt cae- li et terra glo- ri- a tu- a.



Ho- sanna in excelsis. Benedictus qui venit in nomine



Domi- ni. Ho- sanna in excelsis.

5. Pater noster

P 
a-ter noster qui es in caelis, sancti-fi-ce-tur



nomen tu- um, adveni- at regnum tu- um, fi- at volun-



tas tu- a, sic-ut in cae-lo et in ter-ra. Panem nos-



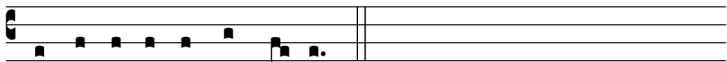
trum co- ti-di- a-num da no-bis ho-di- e, et dimit-te



no-bis de-bi- ta nostra, sic-ut et nos dimit-timus de-bi-



to-ribus nostris; et ne nos indu-cas in tenta-ti- o-nem,



sed li-be-ra nos a ma- lo.

6. Agnus Dei


Grad. Rom. XVIII (sec. XII)



A - gnus De- i, qui tollis pecca- ta mundi, mi-se-
re-re no-bis. Agnus De- i, qui tollis pecca- ta
mundi, mi-se-re-re no- bis. Agnus De- i, qui tol-
lis pecca- ta mundi, do-na no-bis pa- cem.

II CANTUS VARII

7. O salutaris hostia



O sa- lu- ta- ris hosti- a, quae caeli pandis o-



sti- um, bella premunt hosti- li- a; da robur, fer auxi-li-um.



Uni tri-noque Domino sit sempi-ter-na glo-ri- a:



qui vi-tam sine termino nobis donet in patri- a. A- men.

8. Adoro te devote

A  -doro te devo-te, la- tens De- i- tas, quae sub

 his figu-ris ve-re la-ti-tas. Ti-bi se cor me- um to-tum

 sub-i-cit, qui- a te contemplans to-tum de-fi-cit. A- men.

2
Visus, tactus, gustus in te fallitur,
sed auditu solo tuto creditur.
Credo quidquid dixit Dei Filius:
nil hoc Verbo veritatis verius.

3
In cruce latebat sola Deitas,
at hic latet simul et humanitas.
Ambo tamen credens atque confitens;
peto quod petivit latro paenitens.

4
Plagas, sicut Thomas, non intueor,
Deum tamen meum te confiteor.
Fac me tibi semper magis credere,
in te spem habere, te diligere.

5
O memoriale mortis Domini,
panis vivus vitam praestans homini,
praesta meae menti de te vivere,
et te illi semper dulce sapere.

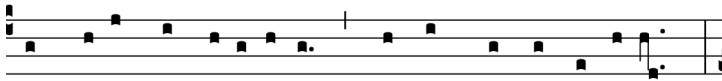
6
Pie pellicane, Iesu Domine,
me immundum munda tuo sanguine,
cuius una stilla salvum facere
totum mundum quit ab omni scelere.

7
Iesu, quem velatum nunc aspicio,
oro fiat illud quod tam sitio:
ut te revelata cernens facie,
visu sim beatus tuae gloriae. Amen.

9. Pange lingua - Tantum ergo



Pange lingua glo-ri-o-si Cor-po-ris myste-ri-um,



Sanguisque pre-ti- o-si, quem in mundi pre- ti- um,



fructus ventris gene-ro-si Rex effudit genti- um. A- men.

2

Nobis datus, nobis natus ex intacta Virgine,
et in mundo conversatus, sparso verbi semine,
sui moras incolatus miro clausit ordine.

3

In supremæ nocte cenæ, recumbens cum fratribus,
observata lege plene cibus in legalibus,
cibum turbae duodenæ se dat suis manibus.

4

Verbum caro panem verum verbo carnem efficit,
fitque sanguis Christi merum; et, si sensus deficit,
ad firmandum cor sincerum sola fides sufficit.

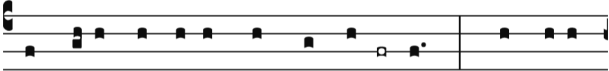
5

Tantum ergo Sacramentum veneremur cernui,
et antiquum documentum novo cedat ritui:
praestet fides supplementum sensuum defectui.

6

Genitori Genitoque laus et iubilatio;
salus, honor, virtus quoque sit et benedictio;
Procedenti ab utroque compar sit laudatio. Amen.

10. Laudate Dominum

L  **audate Dominum omnes gen- tes, * laudate**



e-um omnes popu- li.

Quoniam confirmata est super nos misericordia eius,*
et veritas Domini manet *in aeternum*.

Gloria Patri *et Filio*,*
et Spiritui Sancto.

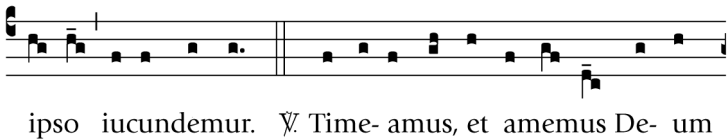
Sicut erat in principio et nunc *et semper*,*
et in saecula saeculorum. Amen.

11. Parce Domine

P arce Domi-ne, parce popu-lo tu-o, ne in
ae-ternum i-rasca-ris no-bis.

Musical notation for the first part of 'Parce Domine'. It consists of two staves. The top staff has a treble clef and a key signature of one flat (B-flat). The melody begins with a quarter note G4, followed by quarter notes A4, Bb4, C5, D5, E5, F5, G5, A5, Bb5, C6, D6, E6, F6, G6, A6, Bb6, C7, D7, E7, F7, G7, A7, Bb7, C8, D8, E8, F8, G8, A8, Bb8, C9, D9, E9, F9, G9, A9, Bb9, C10, D10, E10, F10, G10, A10, Bb10, C11, D11, E11, F11, G11, A11, Bb11, C12, D12, E12, F12, G12, A12, Bb12, C13, D13, E13, F13, G13, A13, Bb13, C14, D14, E14, F14, G14, A14, Bb14, C15, D15, E15, F15, G15, A15, Bb15, C16, D16, E16, F16, G16, A16, Bb16, C17, D17, E17, F17, G17, A17, Bb17, C18, D18, E18, F18, G18, A18, Bb18, C19, D19, E19, F19, G19, A19, Bb19, C20, D20, E20, F20, G20, A20, Bb20, C21, D21, E21, F21, G21, A21, Bb21, C22, D22, E22, F22, G22, A22, Bb22, C23, D23, E23, F23, G23, A23, Bb23, C24, D24, E24, F24, G24, A24, Bb24, C25, D25, E25, F25, G25, A25, Bb25, C26, D26, E26, F26, G26, A26, Bb26, C27, D27, E27, F27, G27, A27, Bb27, C28, D28, E28, F28, G28, A28, Bb28, C29, D29, E29, F29, G29, A29, Bb29, C30, D30, E30, F30, G30, A30, Bb30, C31, D31, E31, F31, G31, A31, Bb31, C32, D32, E32, F32, G32, A32, Bb32, C33, D33, E33, F33, G33, A33, Bb33, C34, D34, E34, F34, G34, A34, Bb34, C35, D35, E35, F35, G35, A35, Bb35, C36, D36, E36, F36, G36, A36, Bb36, C37, D37, E37, F37, G37, A37, Bb37, C38, D38, E38, F38, G38, A38, Bb38, C39, D39, E39, F39, G39, A39, Bb39, C40, D40, E40, F40, G40, A40, Bb40, C41, D41, E41, F41, G41, A41, Bb41, C42, D42, E42, F42, G42, A42, Bb42, C43, D43, E43, F43, G43, A43, Bb43, C44, D44, E44, F44, G44, A44, Bb44, C45, D45, E45, F45, G45, A45, Bb45, C46, D46, E46, F46, G46, A46, Bb46, C47, D47, E47, F47, G47, A47, Bb47, C48, D48, E48, F48, G48, A48, Bb48, C49, D49, E49, F49, G49, A49, Bb49, C50, D50, E50, F50, G50, A50, Bb50, C51, D51, E51, F51, G51, A51, Bb51, C52, D52, E52, F52, G52, A52, Bb52, C53, D53, E53, F53, G53, A53, Bb53, C54, D54, E54, F54, G54, A54, Bb54, C55, D55, E55, F55, G55, A55, Bb55, C56, D56, E56, F56, G56, A56, Bb56, C57, D57, E57, F57, G57, A57, Bb57, C58, D58, E58, F58, G58, A58, Bb58, C59, D59, E59, F59, G59, A59, Bb59, C60, D60, E60, F60, G60, A60, Bb60, C61, D61, E61, F61, G61, A61, Bb61, C62, D62, E62, F62, G62, A62, Bb62, C63, D63, E63, F63, G63, A63, Bb63, C64, D64, E64, F64, G64, A64, Bb64, C65, D65, E65, F65, G65, A65, Bb65, C66, D66, E66, F66, G66, A66, Bb66, C67, D67, E67, F67, G67, A67, Bb67, C68, D68, E68, F68, G68, A68, Bb68, C69, D69, E69, F69, G69, A69, Bb69, C70, D70, E70, F70, G70, A70, Bb70, C71, D71, E71, F71, G71, A71, Bb71, C72, D72, E72, F72, G72, A72, Bb72, C73, D73, E73, F73, G73, A73, Bb73, C74, D74, E74, F74, G74, A74, Bb74, C75, D75, E75, F75, G75, A75, Bb75, C76, D76, E76, F76, G76, A76, Bb76, C77, D77, E77, F77, G77, A77, Bb77, C78, D78, E78, F78, G78, A78, Bb78, C79, D79, E79, F79, G79, A79, Bb79, C80, D80, E80, F80, G80, A80, Bb80, C81, D81, E81, F81, G81, A81, Bb81, C82, D82, E82, F82, G82, A82, Bb82, C83, D83, E83, F83, G83, A83, Bb83, C84, D84, E84, F84, G84, A84, Bb84, C85, D85, E85, F85, G85, A85, Bb85, C86, D86, E86, F86, G86, A86, Bb86, C87, D87, E87, F87, G87, A87, Bb87, C88, D88, E88, F88, G88, A88, Bb88, C89, D89, E89, F89, G89, A89, Bb89, C90, D90, E90, F90, G90, A90, Bb90, C91, D91, E91, F91, G91, A91, Bb91, C92, D92, E92, F92, G92, A92, Bb92, C93, D93, E93, F93, G93, A93, Bb93, C94, D94, E94, F94, G94, A94, Bb94, C95, D95, E95, F95, G95, A95, Bb95, C96, D96, E96, F96, G96, A96, Bb96, C97, D97, E97, F97, G97, A97, Bb97, C98, D98, E98, F98, G98, A98, Bb98, C99, D99, E99, F99, G99, A99, Bb99, C100, D100, E100, F100, G100, A100, Bb100, C101, D101, E101, F101, G101, A101, Bb101, C102, D102, E102, F102, G102, A102, Bb102, C103, D103, E103, F103, G103, A103, Bb103, C104, D104, E104, F104, G104, A104, Bb104, C105, D105, E105, F105, G105, A105, Bb105, C106, D106, E106, F106, G106, A106, Bb106, C107, D107, E107, F107, G107, A107, Bb107, C108, D108, E108, F108, G108, A108, Bb108, C109, D109, E109, F109, G109, A109, Bb109, C110, D110, E110, F110, G110, A110, Bb110, C111, D111, E111, F111, G111, A111, Bb111, C112, D112, E112, F112, G112, A112, Bb112, C113, D113, E113, F113, G113, A113, Bb113, C114, D114, E114, F114, G114, A114, Bb114, C115, D115, E115, F115, G115, A115, Bb115, C116, D116, E116, F116, G116, A116, Bb116, C117, D117, E117, F117, G117, A117, Bb117, C118, D118, E118, F118, G118, A118, Bb118, C119, D119, E119, F119, G119, A119, Bb119, C120, D120, E120, F120, G120, A120, Bb120, C121, D121, E121, F121, G121, A121, Bb121, C122, D122, E122, F122, G122, A122, Bb122, C123, D123, E123, F123, G123, A123, Bb123, C124, D124, E124, F124, G124, A124, Bb124, C125, D125, E125, F125, G125, A125, Bb125, C126, D126, E126, F126, G126, A126, Bb126, C127, D127, E127, F127, G127, A127, Bb127, C128, D128, E128, F128, G128, A128, Bb128, C129, D129, E129, F129, G129, A129, Bb129, C130, D130, E130, F130, G130, A130, Bb130, C131, D131, E131, F131, G131, A131, Bb131, C132, D132, E132, F132, G132, A132, Bb132, C133, D133, E133, F133, G133, A133, Bb133, C134, D134, E134, F134, G134, A134, Bb134, C135, D135, E135, F135, G135, A135, Bb135, C136, D136, E136, F136, G136, A136, Bb136, C137, D137, E137, F137, G137, A137, Bb137, C138, D138, E138, F138, G138, A138, Bb138, C139, D139, E139, F139, G139, A139, Bb139, C140, D140, E140, F140, G140, A140, Bb140, C141, D141, E141, F141, G141, A141, Bb141, C142, D142, E142, F142, G142, A142, Bb142, C143, D143, E143, F143, G143, A143, Bb143, C144, D144, E144, F144, G144, A144, Bb144, C145, D145, E145, F145, G145, A145, Bb145, C146, D146, E146, F146, G146, A146, Bb146, C147, D147, E147, F147, G147, A147, Bb147, C148, D148, E148, F148, G148, A148, Bb148, C149, D149, E149, F149, G149, A149, Bb149, C150, D150, E150, F150, G150, A150, Bb150, C151, D151, E151, F151, G151, A151, Bb151, C152, D152, E152, F152, G152, A152, Bb152, C153, D153, E153, F153, G153, A153, Bb153, C154, D154, E154, F154, G154, A154, Bb154, C155, D155, E155, F155, G155, A155, Bb155, C156, D156, E156, F156, G156, A156, Bb156, C157, D157, E157, F157, G157, A157, Bb157, C158, D158, E158, F158, G158, A158, Bb158, C159, D159, E159, F159, G159, A159, Bb159, C160, D160, E160, F160, G160, A160, Bb160, C161, D161, E161, F161, G161, A161, Bb161, C162, D162, E162, F162, G162, A162, Bb162, C163, D163, E163, F163, G163, A163, Bb163, C164, D164, E164, F164, G164, A164, Bb164, C165, D165, E165, F165, G165, A165, Bb165, C166, D166, E166, F166, G166, A166, Bb166, C167, D167, E167, F167, G167, A167, Bb167, C168, D168, E168, F168, G168, A168, Bb168, C169, D169, E169, F169, G169, A169, Bb169, C170, D170, E170, F170, G170, A170, Bb170, C171, D171, E171, F171, G171, A171, Bb171, C172, D172, E172, F172, G172, A172, Bb172, C173, D173, E173, F173, G173, A173, Bb173, C174, D174, E174, F174, G174, A174, Bb174, C175, D175, E175, F175, G175, A175, Bb175, C176, D176, E176, F176, G176, A176, Bb176, C177, D177, E177, F177, G177, A177, Bb177, C178, D178, E178, F178, G178, A178, Bb178, C179, D179, E179, F179, G179, A179, Bb179, C180, D180, E180, F180, G180, A180, Bb180, C181, D181, E181, F181, G181, A181, Bb181, C182, D182, E182, F182, G182, A182, Bb182, C183, D183, E183, F183, G183, A183, Bb183, C184, D184, E184, F184, G184, A184, Bb184, C185, D185, E185, F185, G185, A185, Bb185, C186, D186, E186, F186, G186, A186, Bb186, C187, D187, E187, F187, G187, A187, Bb187, C188, D188, E188, F188, G188, A188, Bb188, C189, D189, E189, F189, G189, A189, Bb189, C190, D190, E190, F190, G190, A190, Bb190, C191, D191, E191, F191, G191, A191, Bb191, C192, D192, E192, F192, G192, A192, Bb192, C193, D193, E193, F193, G193, A193, Bb193, C194, D194, E194, F194, G194, A194, Bb194, C195, D195, E195, F195, G195, A195, Bb195, C196, D196, E196, F196, G196, A196, Bb196, C197, D197, E197, F197, G197, A197, Bb197, C198, D198, E198, F198, G198, A198, Bb198, C199, D199, E199, F199, G199, A199, Bb199, C200, D200, E200, F200, G200, A200, Bb200, C201, D201, E201, F201, G201, A201, Bb201, C202, D202, E202, F202, G202, A202, Bb202, C203, D203, E203, F203, G203, A203, Bb203, C204, D204, E204, F204, G204, A204, Bb204, C205, D205, E205, F205, G205, A205, Bb205, C206, D206, E206, F206, G206, A206, Bb206, C207, D207, E207, F207, G207, A207, Bb207, C208, D208, E208, F208, G208, A208, Bb208, C209, D209, E209, F209, G209, A209, Bb209, C210, D210, E210, F210, G210, A210, Bb210, C211, D211, E211, F211, G211, A211, Bb211, C212, D212, E212, F212, G212, A212, Bb212, C213, D213, E213, F213, G213, A213, Bb213, C214, D214, E214, F214, G214, A214, Bb214, C215, D215, E215, F215, G215, A215, Bb215, C216, D216, E216, F216, G216, A216, Bb216, C217, D217, E217, F217, G217, A217, Bb217, C218, D218, E218, F218, G218, A218, Bb218, C219, D219, E219, F219, G219, A219, Bb219, C220, D220, E220, F220, G220, A220, Bb220, C221, D221, E221, F221, G221, A221, Bb221, C222, D222, E222, F222, G222, A222, Bb222, C223, D223, E223, F223, G223, A223, Bb223, C224, D224, E224, F224, G224, A224, Bb224, C225, D225, E225, F225, G225, A225, Bb225, C226, D226, E226, F226, G226, A226, Bb226, C227, D227, E227, F227, G227, A227, Bb227, C228, D228, E228, F228, G228, A228, Bb228, C229, D229, E229, F229, G229, A229, Bb229, C230, D230, E230, F230, G230, A230, Bb230, C231, D231, E231, F231, G231, A231, Bb231, C232, D232, E232, F232, G232, A232, Bb232, C233, D233, E233, F233, G233, A233, Bb233, C234, D234, E234, F234, G234, A234, Bb234, C235, D235, E235, F235, G235, A235, Bb235, C236, D236, E236, F236, G236, A236, Bb236, C237, D237, E237, F237, G237, A237, Bb237, C238, D238, E238, F238, G238, A238, Bb238, C239, D239, E239, F239, G239, A239, Bb239, C240, D240, E240, F240, G240, A240, Bb240, C241, D241, E241, F241, G241, A241, Bb241, C242, D242, E242, F242, G242, A242, Bb242, C243, D243, E243, F243, G243, A243, Bb243, C244, D244, E244, F244, G244, A244, Bb244, C245, D245, E245, F245, G245, A245, Bb245, C246, D246, E246, F246, G246, A246, Bb246, C247, D247, E247, F247, G247, A247, Bb247, C248, D248, E248, F248, G248, A248, Bb248, C249, D249, E249, F249, G249, A249, Bb249, C250, D250, E250, F250, G250, A250, Bb250, C251, D251, E251, F251, G251, A251, Bb251, C252, D252, E252, F252, G252, A252, Bb252, C253, D253, E253, F253, G253, A253, Bb253, C254, D254, E254, F254, G254, A254, Bb254, C255, D255, E255, F255, G255, A255, Bb255, C256, D256, E256, F256, G256, A256, Bb256, C257, D257, E257, F257, G257, A257, Bb257, C258, D258, E258, F258, G258, A258, Bb258, C259, D259, E259, F259, G259, A259, Bb259, C260, D260, E260, F260, G260, A260, Bb260, C261, D261, E261, F261, G261, A261, Bb261, C262, D262, E262, F262, G262, A262, Bb262, C263, D263, E263, F263, G263, A263, Bb263, C264, D264, E264, F264, G264, A264, Bb264, C265, D265, E265, F265, G265, A265, Bb265, C266, D266, E266, F266, G266, A266, Bb266, C267, D267, E267, F267, G267, A267, Bb267, C268, D268, E268, F268, G268, A268, Bb268, C269, D269, E269, F269, G269, A269, Bb269, C270, D270, E270, F270, G270, A270, Bb270, C271, D271, E271, F271, G271, A271, Bb271, C272, D272, E272, F272, G272, A272, Bb272, C273, D273, E273, F273, G273, A273, Bb273, C274, D274, E274, F274, G274, A274, Bb274, C275, D275, E275, F275, G275, A275, Bb275, C276, D276, E276, F276, G276, A276, Bb276, C277, D277, E277, F277, G277, A277, Bb277, C278, D278, E278, F278, G278, A278, Bb278, C279, D279, E279, F279, G279, A279, Bb279, C280, D280, E280, F280, G280, A280, Bb280, C281, D281, E281, F281, G281, A281, Bb281, C282, D282, E282, F282, G282, A282, Bb282, C283, D283, E283, F283, G283, A283, Bb283, C284, D284, E284, F284, G284, A284, Bb284, C285, D285, E285, F285, G285, A285, Bb285, C286, D286, E286, F286, G286, A286, Bb286, C287, D287, E287, F287, G287, A287, Bb287, C288, D288, E288, F288, G288, A288, Bb288, C289, D289, E289, F289, G289, A289, Bb289, C290, D290, E290, F290, G290, A290, Bb290, C291, D291, E291, F291, G291, A291, Bb291, C292, D292, E292, F292, G292, A292, Bb292, C293, D293, E293, F293, G293, A293, Bb293, C294, D294, E294, F294, G294, A294, Bb294, C295, D295, E295, F295, G295, A295, Bb295, C296, D296, E296, F296, G296, A296, Bb296, C297, D297, E297, F297, G297, A297, Bb297, C298, D298, E298, F298, G298, A298, Bb298, C299, D299, E299, F299, G299, A299, Bb299, C300, D300, E300, F300, G300, A300, Bb300, C301, D301, E301, F301, G301, A301, Bb301, C302, D302, E302, F302, G302, A302, Bb302, C303, D303, E303, F303, G303, A303, Bb303, C304, D304, E304, F304, G304, A304, Bb304, C305, D305, E305, F305, G305, A305, Bb305, C306, D306, E306, F306, G306, A306, Bb306, C307, D307, E307, F307, G307, A307, Bb307, C308, D308, E308, F308, G308, A308, Bb308, C309, D309, E309, F309, G309, A309, Bb309, C310, D310, E310, F310, G310, A310, Bb310, C311, D311, E311, F311, G311, A311, Bb311, C312, D312, E312, F312, G312, A312, Bb312, C313, D313, E313, F313, G313, A313, Bb313, C314, D314, E314, F314, G314, A314, Bb314, C315, D315, E315, F315, G315, A315, Bb315, C316, D316, E316, F316, G316, A316, Bb316, C317, D317, E317, F317, G317, A317, Bb317, C318, D318, E318, F318, G318, A318, Bb318, C319, D319, E319, F319, G319, A319, Bb319, C320, D320, E320, F320, G320, A320, Bb320, C321, D321, E321, F321, G321, A321, Bb321, C322, D322, E322, F322, G322, A322, Bb322, C323, D323, E323, F323, G323, A323, Bb323, C324, D324, E324, F324, G324, A324, Bb324, C325, D325, E325, F325, G325, A325, Bb325, C326, D326, E326, F326, G326, A326, Bb326, C327, D327, E327, F327, G327, A327, Bb327, C328, D328, E328, F328, G328, A328, Bb328, C329, D329, E329, F329, G329, A329, Bb329, C330, D330, E330, F330, G330, A330, Bb330, C331, D331, E331, F331, G331, A331, Bb331, C332, D332, E332, F332, G332, A332, Bb332, C333, D333, E333, F333, G333, A333, Bb333, C334, D334, E334, F334, G334, A334, Bb334, C335, D335, E335, F335, G335, A335, Bb335, C336, D336, E336, F336, G336, A336, Bb336, C337, D337, E337, F337, G337, A337, Bb337, C338, D338, E338, F338, G338, A338, Bb338, C339, D339, E339, F339, G339, A339, Bb339, C340, D340, E340, F340, G340, A340, Bb340, C341, D341, E341, F341, G341, A341, Bb341, C342, D342, E342, F342, G342, A342, Bb342, C343, D343, E343, F343, G343, A343, Bb343, C344, D344, E344, F344, G344, A344, Bb344, C345, D345, E345, F345, G345, A345, Bb345, C346, D346, E346, F346, G346, A346, Bb346, C347, D347, E347, F347, G347, A347, Bb347, C348, D348, E348, F348, G348, A348, Bb348, C349, D349, E349, F349, G349, A349, Bb349, C350, D350, E350, F350, G350, A350, Bb350, C351, D351, E351, F351, G351, A351, Bb351, C352, D352, E352, F352, G352, A352, Bb352, C353, D353, E353, F353, G353, A353, Bb353, C354, D354, E354, F354, G354, A354, Bb354, C355, D355, E355, F355, G355, A355, Bb355, C356, D356, E356, F356, G356, A356, Bb356, C357, D357, E357, F357, G357, A357, Bb357, C358, D358, E358, F358, G358, A358, Bb358, C359, D359, E359, F359, G359, A359, Bb359, C360, D360, E360, F360, G360, A360, Bb360, C361, D361, E361, F361, G361, A361, Bb361, C362, D362, E362, F362, G362, A362, Bb362, C363, D3

13. Ubi caritas



V. Simul ergo cum in unum congregamur.

V. Ne nos mente dividamur, caveamus.

V. Cessent iurgia maligna, cessent lites.

V. Et in medio nostri sit Christus Deus.

Ant. Ubi caritas et amor, Deus ibi est.

V. Simul quoque cum beatis videamus

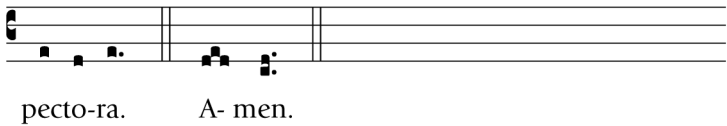
V. Glorianter vultum tuum, Christe Deus:

V. Gaudium, quod est immensum atque probum,

V. Saecula per infinita saeculorum.

Ant. Ubi caritas et amor, Deus ibi est.

14. Veni creator



2
Qui diceris Paraclitus,
donum Dei altissimi,
fons vivus, ignis, caritas
et spiritalis unctio.

3
Tu septiformis munere,
dextrae Dei tu digitus,
tu rite promissum Patris
sermone ditans guttura.

4
Accende lumen sensibus,
infunde amorem cordibus,
infirma nostri corporis
virtute firmans perpeti.

5
Hostem repellas longius
pacemque dones protinus;
ductore sic te praevio
vitemus omne noxium.

6
Per te sciamus da Patrem,
noscamus atque Filium,
te utriusque Spiritum
credamus omni tempore. Amen.

15. Regina cæli



Regina cæ-li, læ-ta-re, alle-lu-ia. Qui-a quem
meru- isti porta-re, alle-lu-ia. Re-surre-xit, sic-ut di-xit,
alle-lu-ia. O-ra pro no-bis De-um, alle-lu- ia.

16. Salve Regina



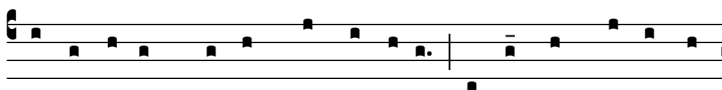
Salve Regina, mater mi-se-ri-cor-di-ae, vi-ta, dul-
ce-do et spes nostra, sal-ve. Ad te clamamus, ex-su-les
fi-lii Evæ. Ad te suspi-ramus gementes et flentes in hac



lacrimarum valle. E-ia ergo, advo-ca-ta nostra, illos



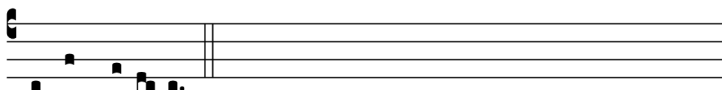
tu-os mi-se-ricordes ocu-los ad nos converte. Et Ie-sum,



be-ne-dictum fructum ventris tu-i, no-bis post hoc ex-si-



li-um ostende. O clemens, o pi-a, o dulcis



Virgo Mari- a.

17. Ave maris stella

The image shows two staves of musical notation. The first staff begins with a large, bold letter 'A' on the left. The notes are represented by black squares on a five-line staff. The second staff continues the melody. Below the first staff, the Latin text '-ve ma-ris stel-la, De-i Ma-ter alma,' is written. Below the second staff, the text 'atque semper Virgo, fe-lix cae-li por-ta. A-men.' is written.

A -ve ma-ris stel-la, De-i Ma-ter alma,
atque semper Virgo, fe-lix cae-li por-ta. A-men.

2
Sumens illud ave
Gabrielis ore,
funda nos in pace,
mutans Evae nomen.

3
Solve vincla reis,
profer lumen caecis,
mala nostra pelle,
bona cuncta posce.

4
Monstra te esse matrem,
sumat per te preces
qui pro nobis natus
tulit esse tuus.

5
Virgo singularis,
inter omnes mitis,
nos culpis solutos
mites fac et castos.

6
Vitam praesta puram,
iter para tutum,
ut videntes Iesum
semper collaetemur.

7
Sit laus Deo Patri,
summo Christo decus,
Spiritus Sancto
Tribus honor unus. Amen.

18. Tu es Petrus

T 
 u es Petrus, et super hanc petram aedi- fi



cabo Eccle-si- am me- am.

I CANTI DELLA TRADIZIONE

I canti gregoriani più semplici

Indice

Introduzione pag. 1

Parte I - Cantus Missæ

1. Kyrie	pag. 3
2. Gloria	» 3
3. Credo	» 5
4. Sanctus	» 9
5. Pater noster	» 10
6. Agnus Dei	» 11

Parte II - Cantus varii

7. O salutaris hostia, inno	pag. 12
8. Adoro te devote, inno	» 13
9. Pange lingua - Tantum ergo, inno	» 14
10. Laudate Dominum, salmo	» 15
11. Parce Domine, antifona	» 16
12. Da pacem, antifona	» 16
13. Ubi caritas, antifona	» 17
14. Veni creator, inno	» 18
15. Regina cæli, antifona	» 19
16. Salve Regina, antifona	» 19
17. Ave maris stella, inno	» 21
18. Tu es Petrus, antifona	» 22

Direzione artistica e ricerca dei testi:

Lorenzo Bianchi e Gabriele Terrone

Registrazione effettuata da Maurizio Rosselli il 7 luglio 1998

nella chiesa del Pontificio Collegio Spagnolo di Roma

Editing e mastering: Lillo Drago

Coro della Cappella Giulia della Basilica di San Pietro in Vaticano

Direzione: Pablo Colino

© **Trenta Giorni Società Cooperativa**

Pubblicazione registrata presso il tribunale di Roma in data 11/11/93, n.501

Direttore: Giulio Andreotti

Direttore Responsabile: Roberto Rotondo

30Giorni nella Chiesa e nel mondo

00173 Roma, via Vincenzo Manzini, 45

Tel. 06.72.64.041

Fax 06.72.633.395

e-mail: 30giorni@30giorni.it

internet: www.30giorni.it

Supplemento al mensile 30GIORNI

Mensile sped. abb. post. 45%

art. 1 comma - DCB

Filiale di Roma

Finito di stampare nel mese di giugno 2011

Stampa: Arti Grafiche La Moderna - Via di Tor Cervara, 171 Roma



**«La Chiesa riconosce il canto gregoriano
come canto proprio della liturgia romana;
perciò nelle azioni liturgiche, a parità di condizioni,
gli si riserva il posto principale»**

**Concilio ecumenico Vaticano II,
costituzione sulla Sacra Liturgia *Sacrosanctum Concilium*, n.116**